

Hypex Filter Design installation and Hypex FusionAmp Firmware update tutorial



PLEASE NOTE

- The explanations in this manual assume that you have a working knowledge of your Windows® computer.
- For information on your operating system, please refer to your operating system manual or the online Help function.
- The explanations of screens and procedures in this manual are primarily for Windows 10® in Windows environments. The screens may vary depending on the version of the operating system.
- This manual is an independent publication and is neither affiliated with, nor authorized, sponsored, or approved by, Microsoft Corporation.

SOFTWARE LICENSE

The SOFTWARE LICENSE acknowledgement will appear when you install the software. By using all or any portion of the software in the machine, you are agreeing to be bound by the terms of the SOFTWARE LICENSE.

BEFORE INSTALLING THE SOFTWARE

- Description
Hypex Filter Designer (HFD) is a program to configure Hypex Electronics B.V. DSP modules.
 - Software
Software and documentation can be found and downloaded at www.hypex.nl.
 - Connecting device
For connecting and operating your device, consult the specified device manual.
-

CONTENT

Page

■ Hypex Filter Design Installation

1. Software download	2
2. Software installation	2

■ Hypex FusionAmp Firmware Update

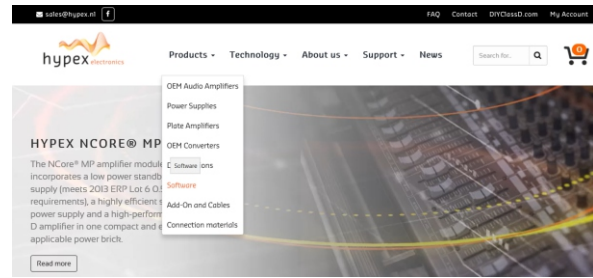
3. Run program	4
4. Firmware update	4
5. Update complete	5
6. Troubleshooting	6

Hypex Filter Design installation and Hypex FusionAmp Firmware update tutorial

1: Software download

Step 1

Goto www.hypex.nl and select **Software** in the tab Products.



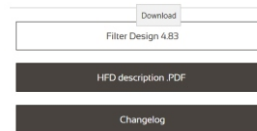
Step 2

Select Hypex Filter Design.



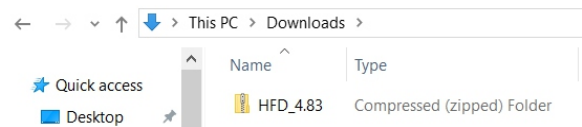
Step 3

Select Filter Design x.x and follow the download instructions from your webbrowser.



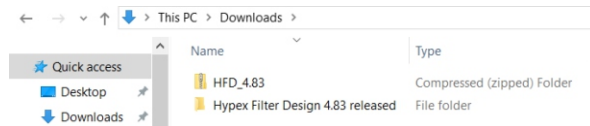
Step 4

Open the download location with Windows File Explorer and locate the compressed HFD-file.



Step 5

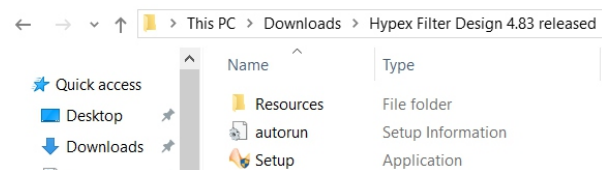
Unpack the file.



2: Software installation

Step 1

Open the unpacked folder and run **Setup**.

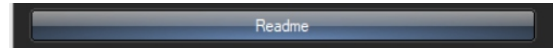


Hypex Filter Design Installer will then prompt.

Hypex Filter Design installation and Hypex FusionAmp Firmware update tutorial

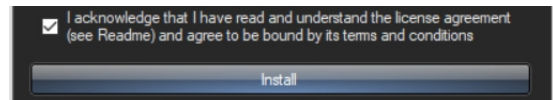
Step 2

Press **Readme** button to view release notes and additional information.



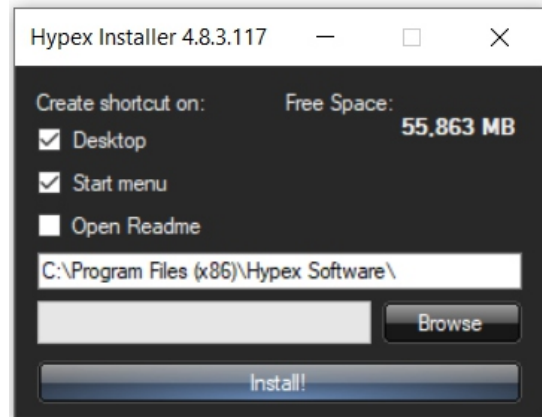
Step 3

Select the checkbox to agree and press **Install** button to proceed.



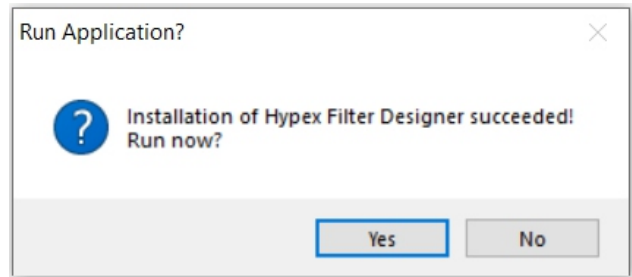
Step 4

Select preferences, choose software destination and press **Install!** button.



Step 5

Press **Yes** button to end the installation process and proceed to run HFD.

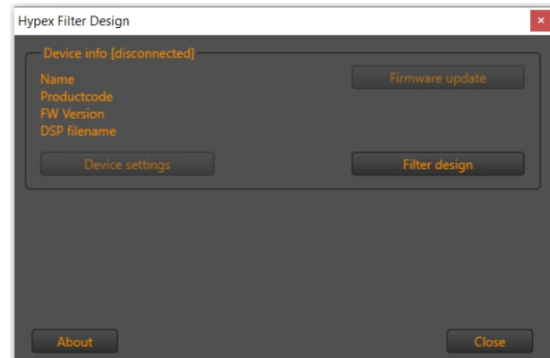


Hypex Filter Design installation and Hypex FusionAmp Firmware update tutorial

3: Run program and connect FusionAmp

Step 1

Locate HFD or the shortlink and execute HFD.



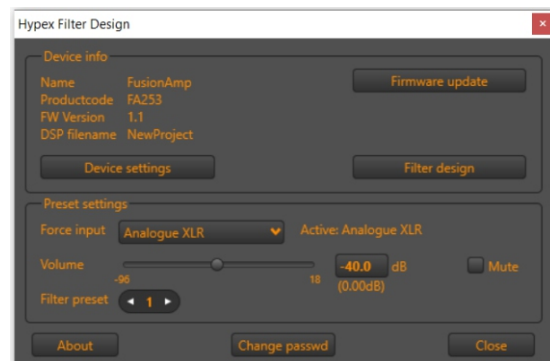
Step 2

Connect the FusionAmp with USB.



Step 3

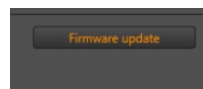
Power on the FusionAmp. HFD automatically detects the device and displays the current firmware version in **Device info**.



4: Firmware Update

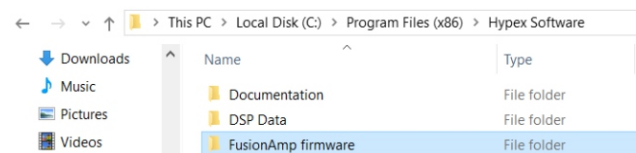
Step 1

Press the button **Firmware update**.

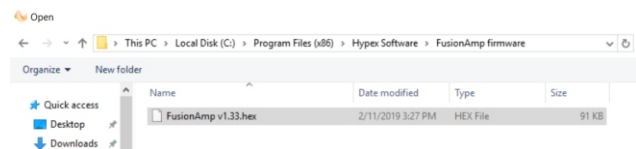


Step 2

The firmware* can be found in the folder **FusionAmp Firmware**.



Select the file and press **Open**.

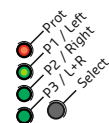


* Note: Check for the latest version our website: Locate your product and select the **Downloads** tab for additional files.

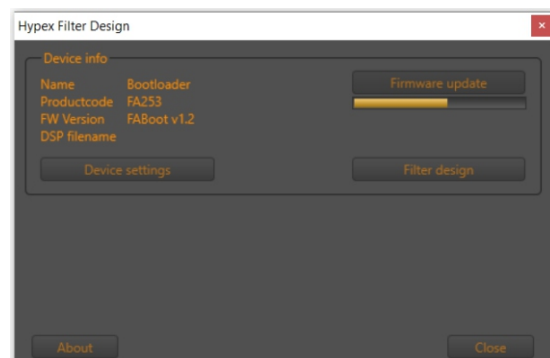
Step 3

HFD automatically updates the firmware on the device.

The lights on the FusionAmp (Prot and P1) will blink during this process.



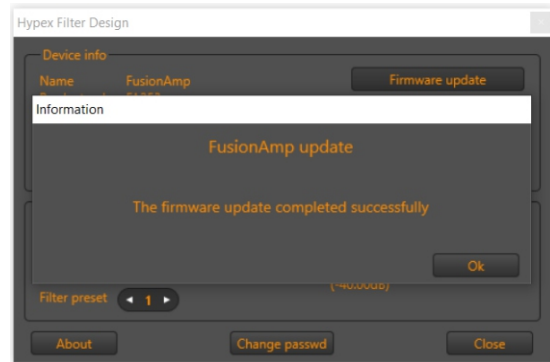
! Don't shut down or disconnect the usb-cable. This could damage the FusionAmp!



Hypex Filter Design installation and Hypex FusionAmp Firmware update tutorial

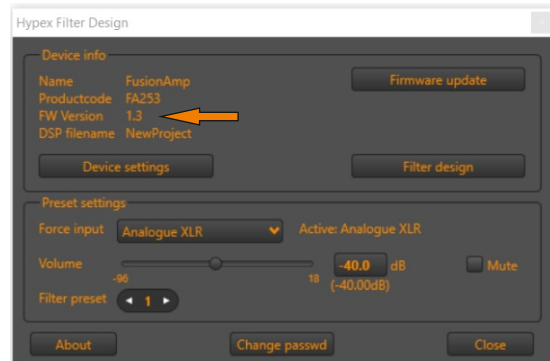
Step 4

The FusionAmp automatically reboots when updating is completed.
Press **Ok** to finish the process.



5: Update complete

Confirm : When the update process is successfully executed the new firmware version is shown in HFD.



Power off/on:

In case of a Master/Slave configuration please follow step 1 to 4.
In case of a single FusionAmp execute only Step 2 and 4.

Step 1

Power down the Slave.

Step 2

Power down the Master and wait at least 5 seconds.

Step 3

Power up the Slave.
(This is necessary for the Master to be able to detect the Slave and configure its settings).

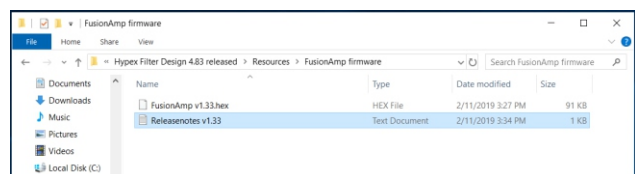
Step 4

Power up the Master.



Note:

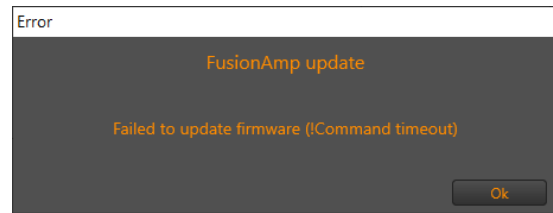
Release notes can be found in the same folder as the firmware:



Hypex Filter Design installation and Hypex FusionAmp Firmware update tutorial

6: Troubleshooting

The next message is displayed in case of an error during the update process.



When the device name is **Bootloader** after turning on or reconnecting, the same error occurred.

In this case, the FusionAmp is not broken; it will not function, however the firmware can still be re-installed.

Execute chapter 4 on page 4 in order to (re-)install the firmware to fix it.

