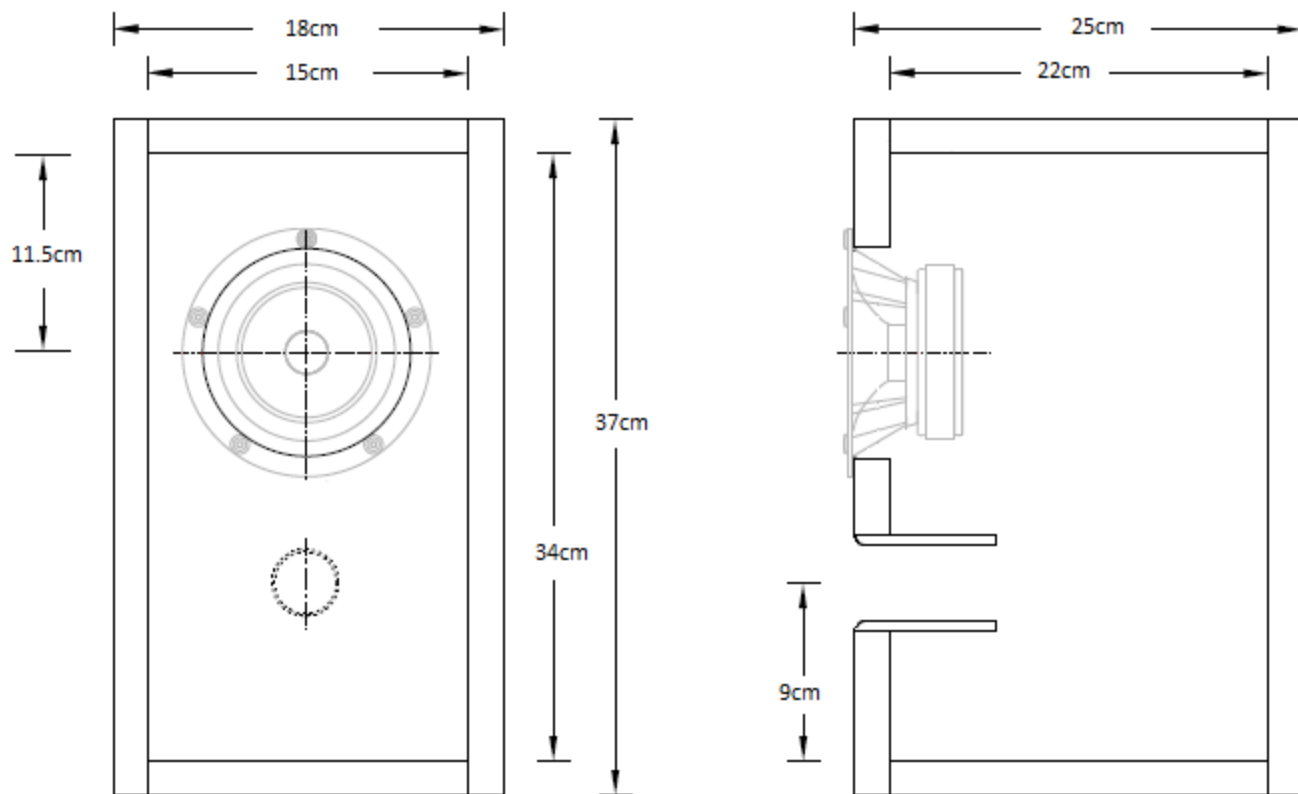


Fenlon 70P



markaudio
New Audio Fidelity

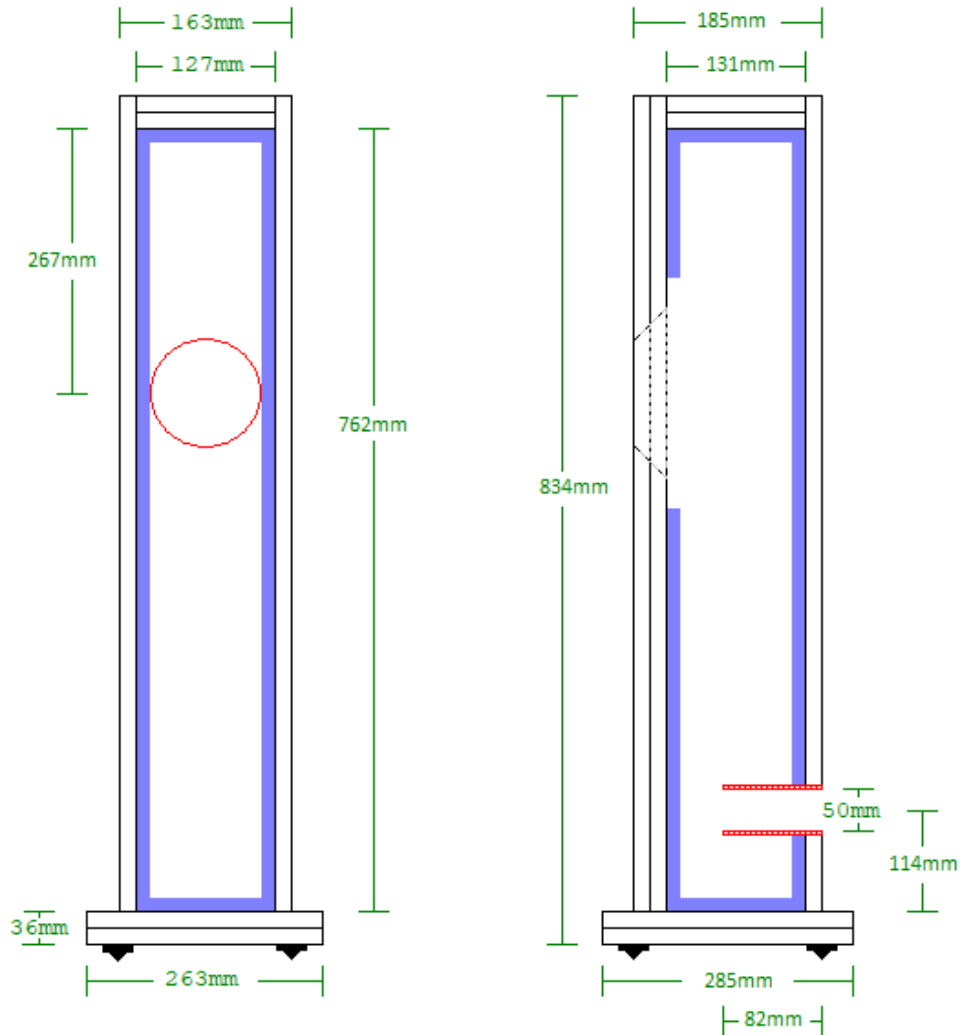
- Simple vented box designed by Mark Fenlon for Pluvia 7PHD driver!
- Industry norm front port!
- Projects bass forwards for interesting and captivating sound characteristic!
- Simple construction!
- Port 3cm wide and 4cm long for powerful bass performance!
- Line box apart from front panel with 2cm - 3cm thick polyester damping material



Design consultant: Dr. S. Lindgren

Pangolin

*Compact Mass-loaded Quarter-wave for
Markaudio Pluvia 7P-HD wideband drive unit*



Notes:

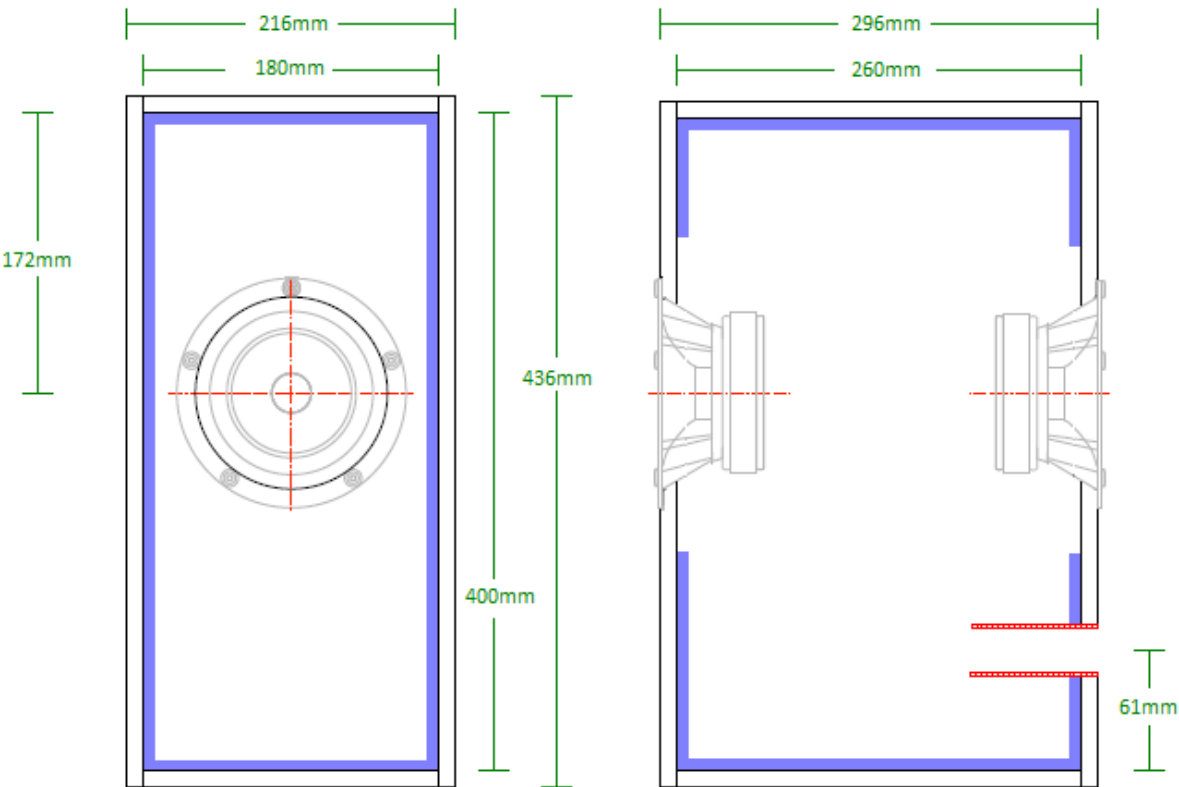
- 0/ Internal dimensions given to left
- 1/ 18mm construction material assumed. MDF acceptable, quality void-free multiply (Baltic birch, apple, marine, bamboo) recommended
- 2/ Bracing not shown but may be included.
- 3/ All internal faces lagged 15mm - 20mm wool felt, jute or other natural fibre. Avoid acoustic foam
- 4/ Front baffle, top & base doubled to maximise rigidity
- 5/ Chamfer driver cutout for proper airflow

Alignment assumes voltage source amplifier with 1/2ohm series resistance included for typical wire loop, connections.

Fb = 54.5Hz

F3 = 48.5Hz [nominal anechoic]

F6 = 45.5Hz [nominal anechoic]



*Bipole standmount for
Markaudio Pluvia 7P-HD
Paper cone wideband drive unit*

Notes

- 0/ Drivers wired in series for nominal 7ohm impedance
- 1/ 18mm construction material assumed. MDF acceptable, quality void-free multiply (Baltic birch, apple, marine, bamboo) recommended
- 2/ Bracing not shown but recommended. See SuperPencil 12P for example of preferred longitudinal bracing scheme
- 3/ All internal faces lagged 10mm - 15mm natural-fibre felt
- 4/ Rear driver may be low-passed via large value shunt capacitor. Ensure HF impedance does not drop excessively low for amplifier

Design assumes voltage source amplifier & 1/2ohm series resistance for typical wire, connections

Fb = 55Hz

F3 = 48Hz [nominal anechoic]

F6 = 44Hz [nominal anechoic]

Duct positioned on rear baffle. [non-flared] dimensions:

30mm diameter x 21mm long

35mm diameter x 32mm long

40mm diameter x 44mm long

50mm diameter x 75mm long

Compact series chamber tuned floorstander for Pluvia 7-P-HD 4in wideband drive unit

Notes:

- 0/ Compact design intended for small spaces & modest SPLs
- 1/ 12mm sheet material assumed. MDF acceptable, quality void-free multiply (Baltic birch, apple, marine, bamboo etc.) recommended
- 2/ Lag all internal faces as indicated 10mm acoustic fibreglass board, wool felt, jute, recycled denim or similar. Avoid acoustic foam. Ensure kept away from driver & vents
- 3/ Chamfer driver cutout to improve airflow & reduce reflections

High-gain alignment assumes voltage source amplifier & 1/2 ohm series resistance for typical wire, connection resistance

Fb = 51Hz

F3 = 48Hz [nominal anechoic]

F6 = 42Hz [nominal anechoic]

